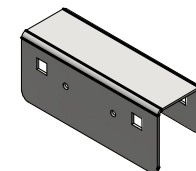
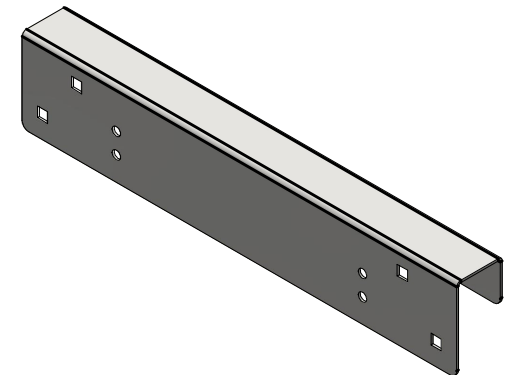
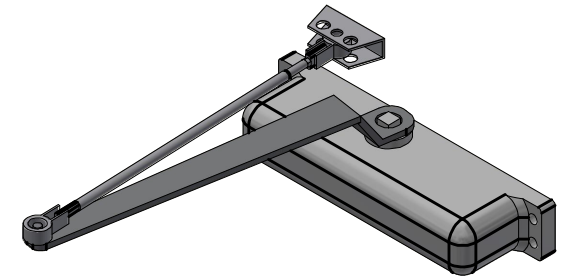
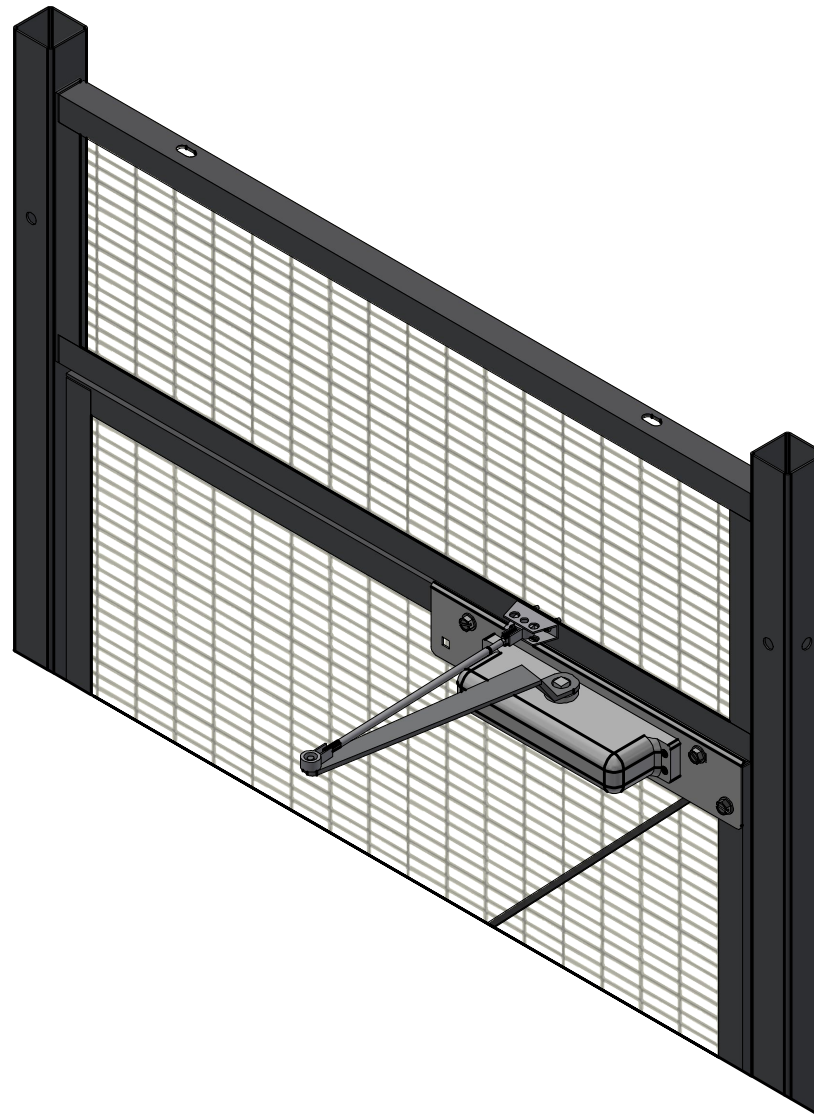


Retrofit Closer

Retrofit Closer Installation Instructions



SUGGESTED TOOLS

Drill with adjustable clutch
#3 Phillips Head Bit for Drill
3/8" Nut Driver
5/16" Nut Driver
1/4" Drill Bit
7/16 Wrench
Flat Head Screwdriver
#2 Phillips Head Screwdriver
Step Ladder

INCLUDED IN THIS MANUAL

<u>Description</u>	<u>Page</u>
Outside Swing	2
Inside Swing	3
Header Tube	4

REVISION (1) 15SEP22

WireCrafters

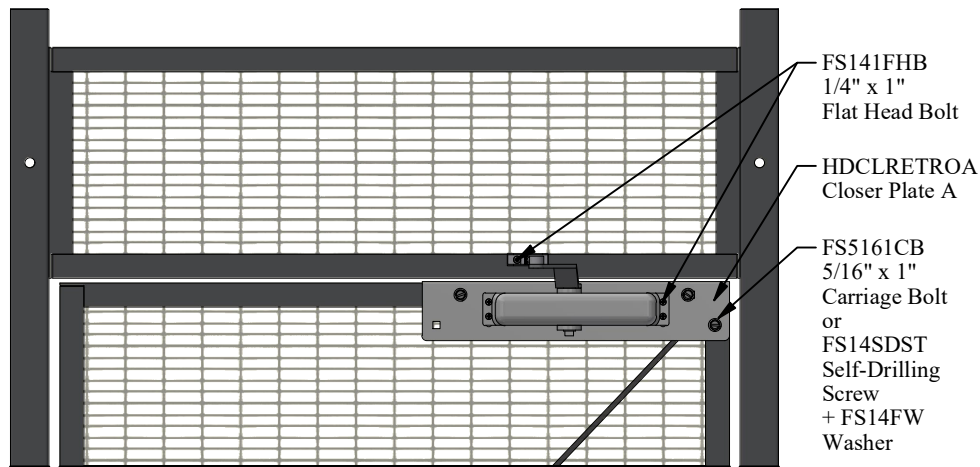


Fig. 1A
FACESIDE MOUNT

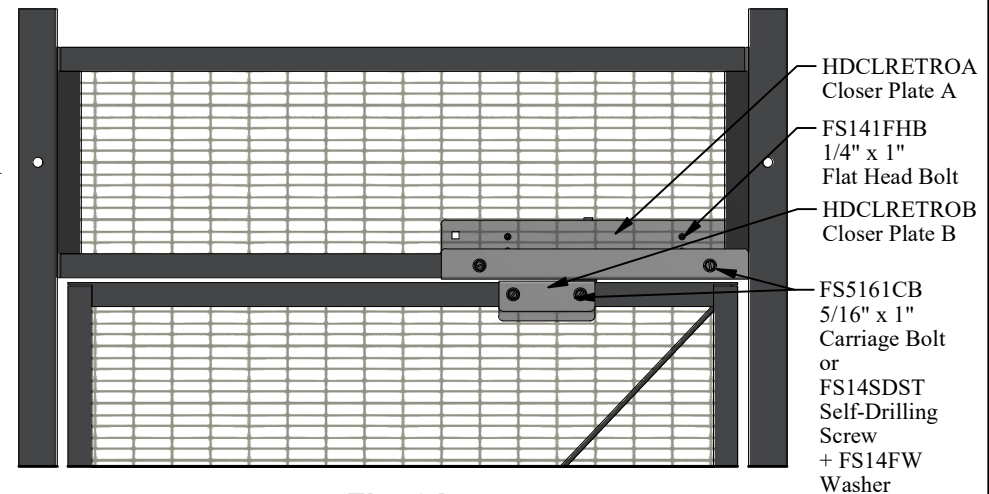


Fig. 2A
INSIDE MOUNT

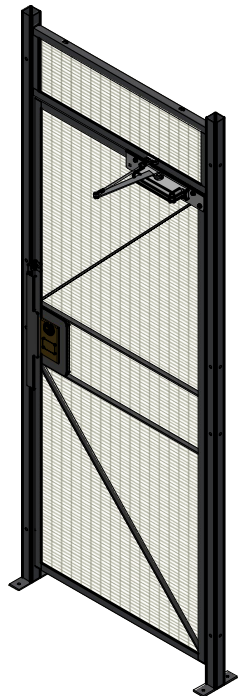


Fig. 1B

Retrofit Closer Instructions

1. *Position closer plate(s) onto door angle as shown above (RH door) or the opposite side for LH doors.
2. **If using carriage bolts, mark the square holes then drill 3/8" holes in face side of door.
3. **If using self-drilling screws with washers, no drilling required.
4. Install closer plate(s) with provided hardware.
5. Drill holes and move/cut wire for closer if necessary.
6. Install closer with provided hardware.

* In the case of a header tube see page 4.

** Either FS5161CB carriage bolts or FS14SDST self-drilling screws may be used. Self-drilling screws are recommended as no drilling is required.

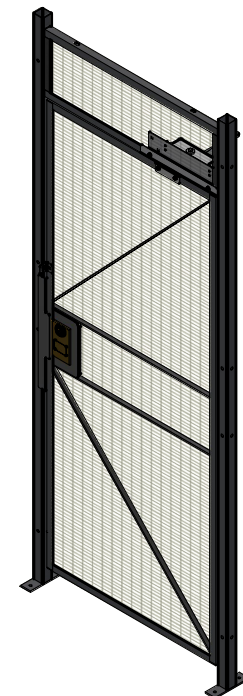


Fig. 2B

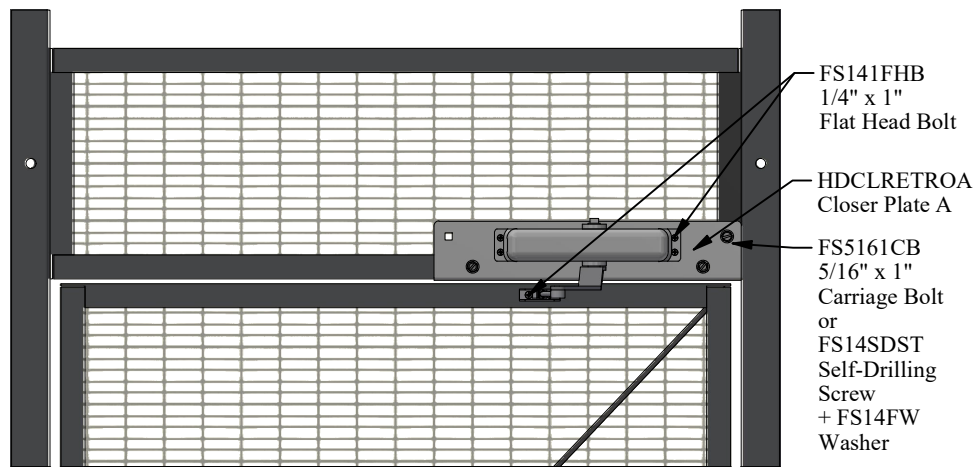


Fig. 3A
FACESIDE MOUNT

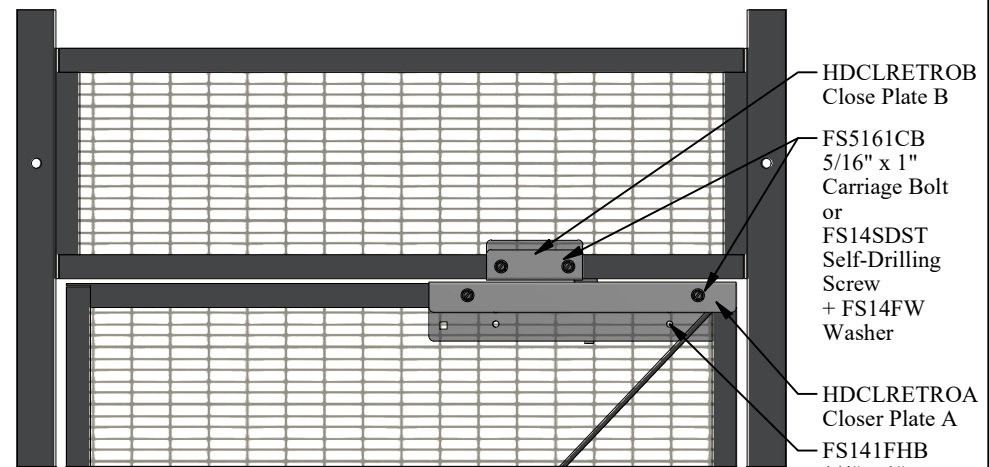


Fig. 4A
INSIDE MOUNT



Fig. 3B

Retrofit Closer Instructions

1. *Position closer plate(s) onto door angle as shown above (RH door) or the opposite side for LH doors.
2. **If using carriage bolts, mark the square holes then drill 3/8" holes in face side of door.
3. **If using self-drilling screws with washers, no drilling required.
4. Install closer plate(s) with provided hardware.
5. Drill holes and move/cut wire for closer if necessary.
6. Install closer with provided hardware.

* In the case of a header tube see page 4.

** Either FS5161CB carriage bolts or FS14SDST self-drilling screws may be used. Self-drilling screws are recommended as no drilling is required.



Fig. 4B

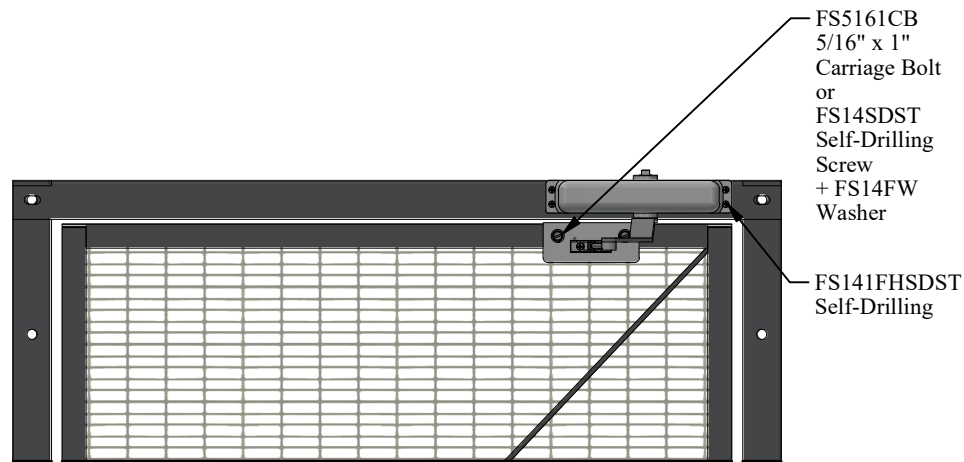


Fig. 5A
INSIDE SWING

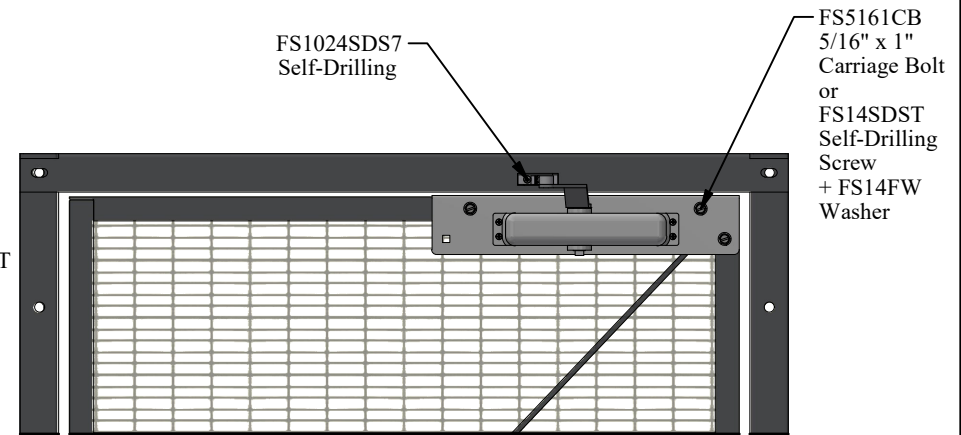


Fig. 6A
OUTSIDE SWING

Retrofit Closer Instructions

1. Position closer onto door as shown in Fig. 5A or Fig. 6A
2. Install closer with FS141FHSDST or FS1024SDST self-drilling screws attaching either the closer or leg directly to the header tube and door frame.

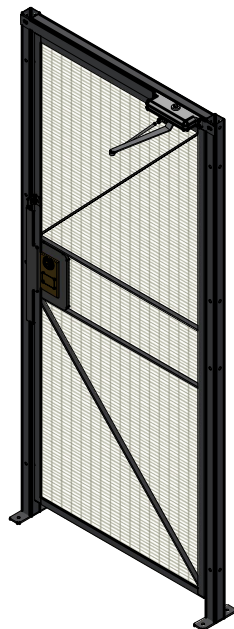


Fig. 5B



Fig. 6B

Thanks for using
WireCrafters

For more information on **WireCrafters** products please visit our website at www.wirecrafters.com